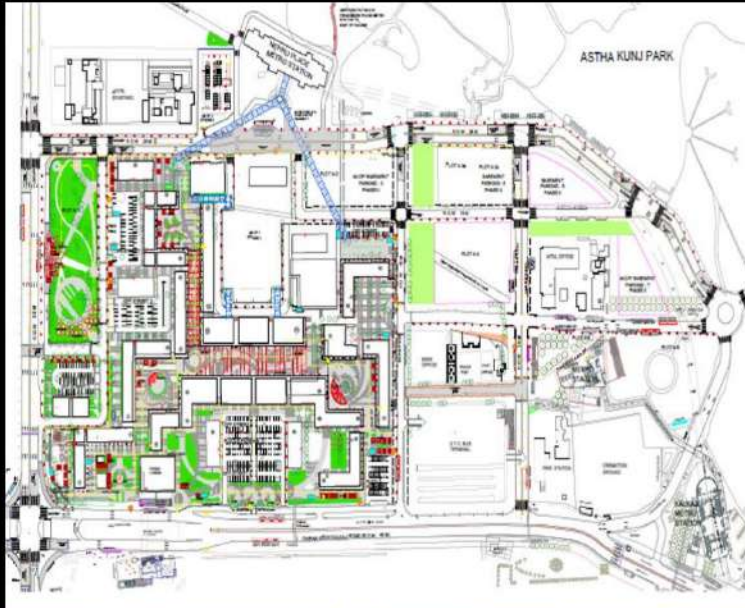
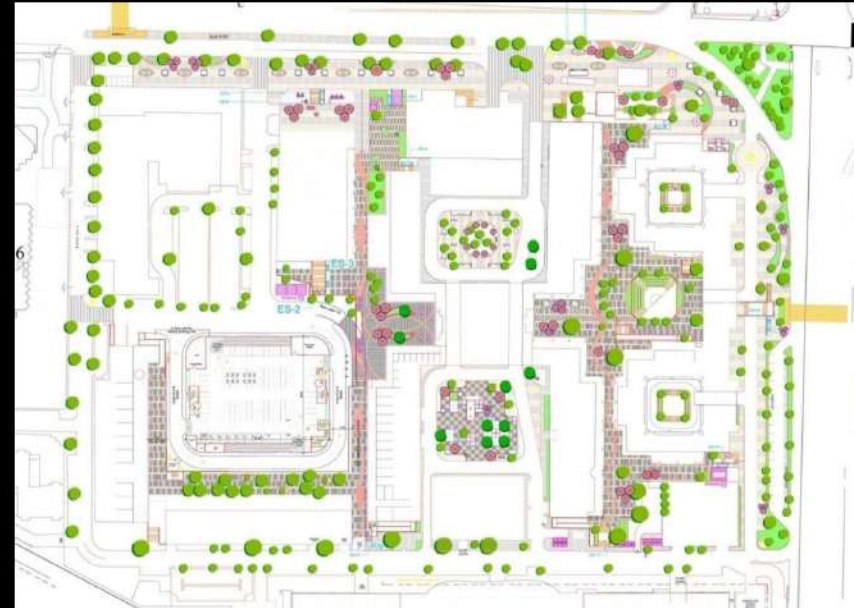


# REFURBISHMENT OF NEHRU PLACE

# REFURBISHMENT OF BHIKAJI CAMA PLACE



Site Area - 3,89,000 sq.m  
 Facilities - Shops, Kioks, Offices, Toilets, Landscaped Plazas, Art and Sculpture elements, Better facilities for PWD  
 Status- - Approved -In-Principle .Work awarded to developer



Site Area - 35 Acres (14.14 Ha)  
 Facilities - Shops, Kioks, Offices, Toilets, Landscaped Plazas, Art and Sculpture elements, Better facilities for PWD  
 Status- - Approved -In-Principle .Work awarded to developer

SOUTH

