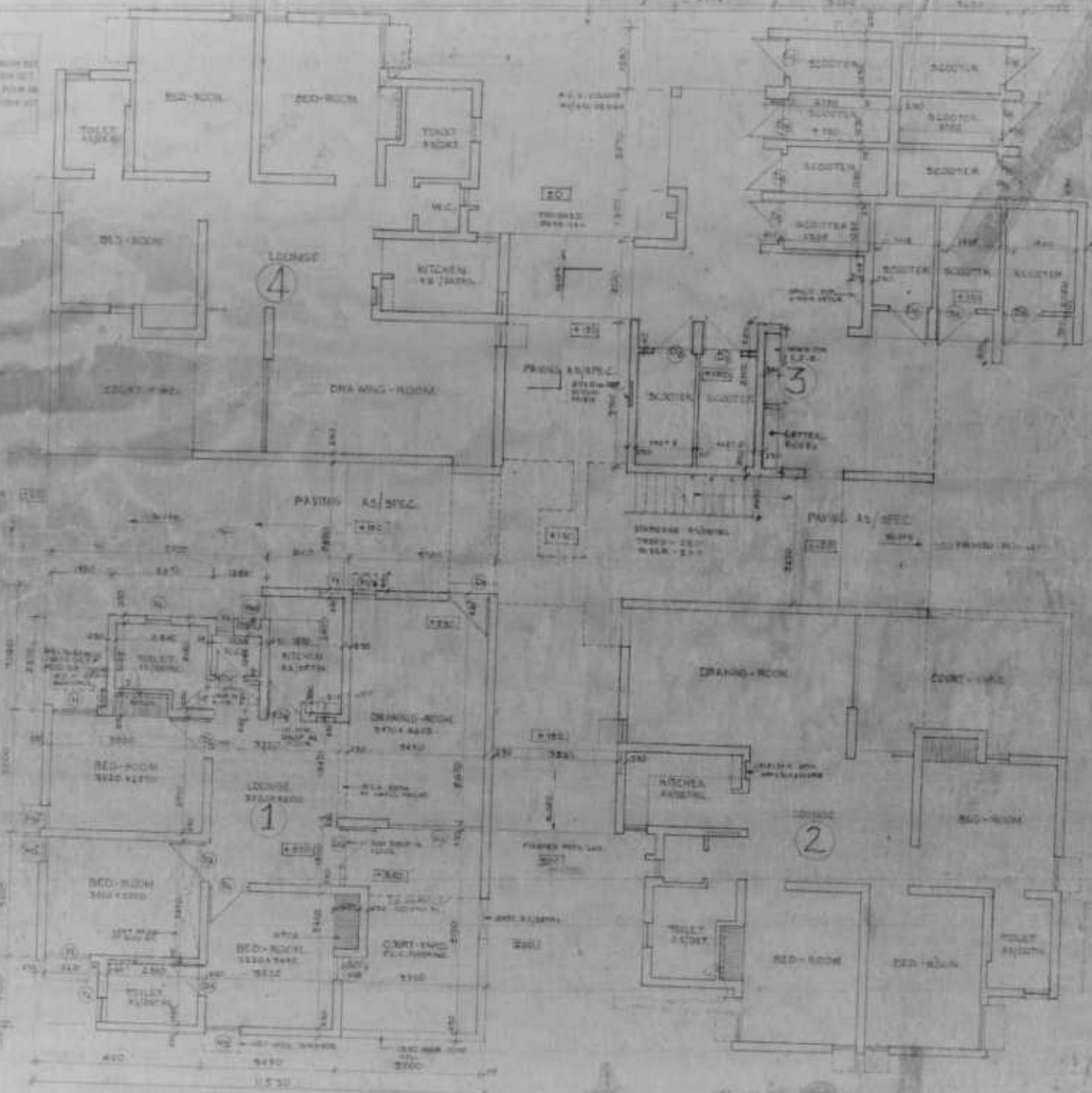


BLOCK 4  
 1ST FLOOR - 2 BED ROOMS  
 2ND FLOOR - 2 BED ROOMS  
 3RD FLOOR - 2 BED ROOMS  
 4TH FLOOR - 2 BED ROOMS

BLOCK 10-12  
 1ST FLOOR - 10 ROOMS  
 2ND FLOOR - 10 ROOMS  
 3RD FLOOR - 10 ROOMS  
 4TH FLOOR - 10 ROOMS

CONTENTS OF DRAWINGS

| SHEET NO. | CONTENTS |
|-----------|----------|
| 1         | GENERAL  |
| 2         | PLAN     |
| 3         | SECTION  |
| 4         | DETAIL   |
| 5         | DETAIL   |
| 6         | DETAIL   |
| 7         | DETAIL   |
| 8         | DETAIL   |
| 9         | DETAIL   |
| 10        | DETAIL   |
| 11        | DETAIL   |
| 12        | DETAIL   |
| 13        | DETAIL   |
| 14        | DETAIL   |
| 15        | DETAIL   |
| 16        | DETAIL   |
| 17        | DETAIL   |
| 18        | DETAIL   |
| 19        | DETAIL   |
| 20        | DETAIL   |

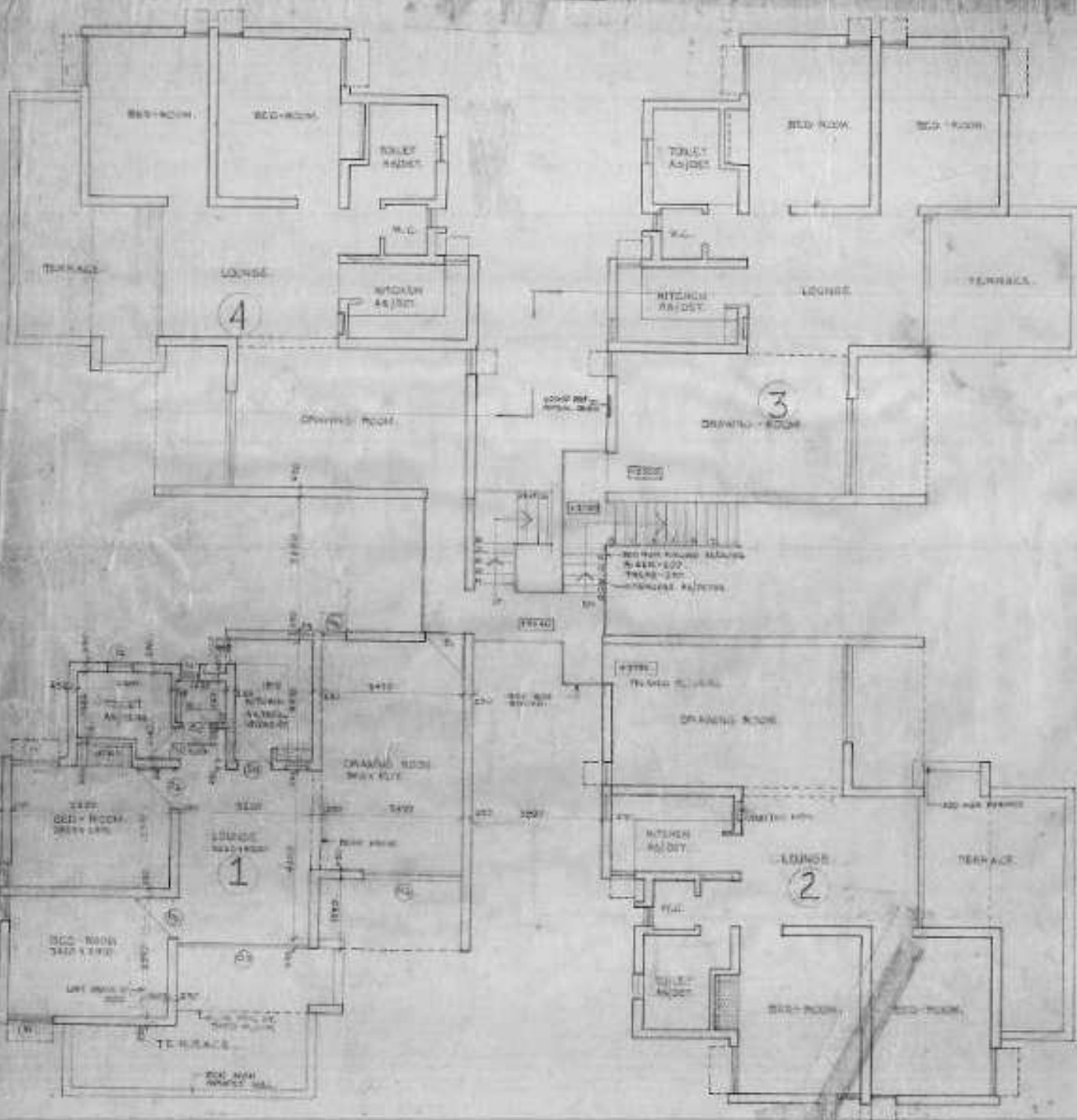


15/11/1914  
 1/11/1914

For 10/11/1914  
 1/11/1914

BLOCK 10-12  
 1ST FLOOR - 10 ROOMS  
 2ND FLOOR - 10 ROOMS  
 3RD FLOOR - 10 ROOMS  
 4TH FLOOR - 10 ROOMS

1/11/1914  
 1/11/1914  
 1/11/1914



*See next page*

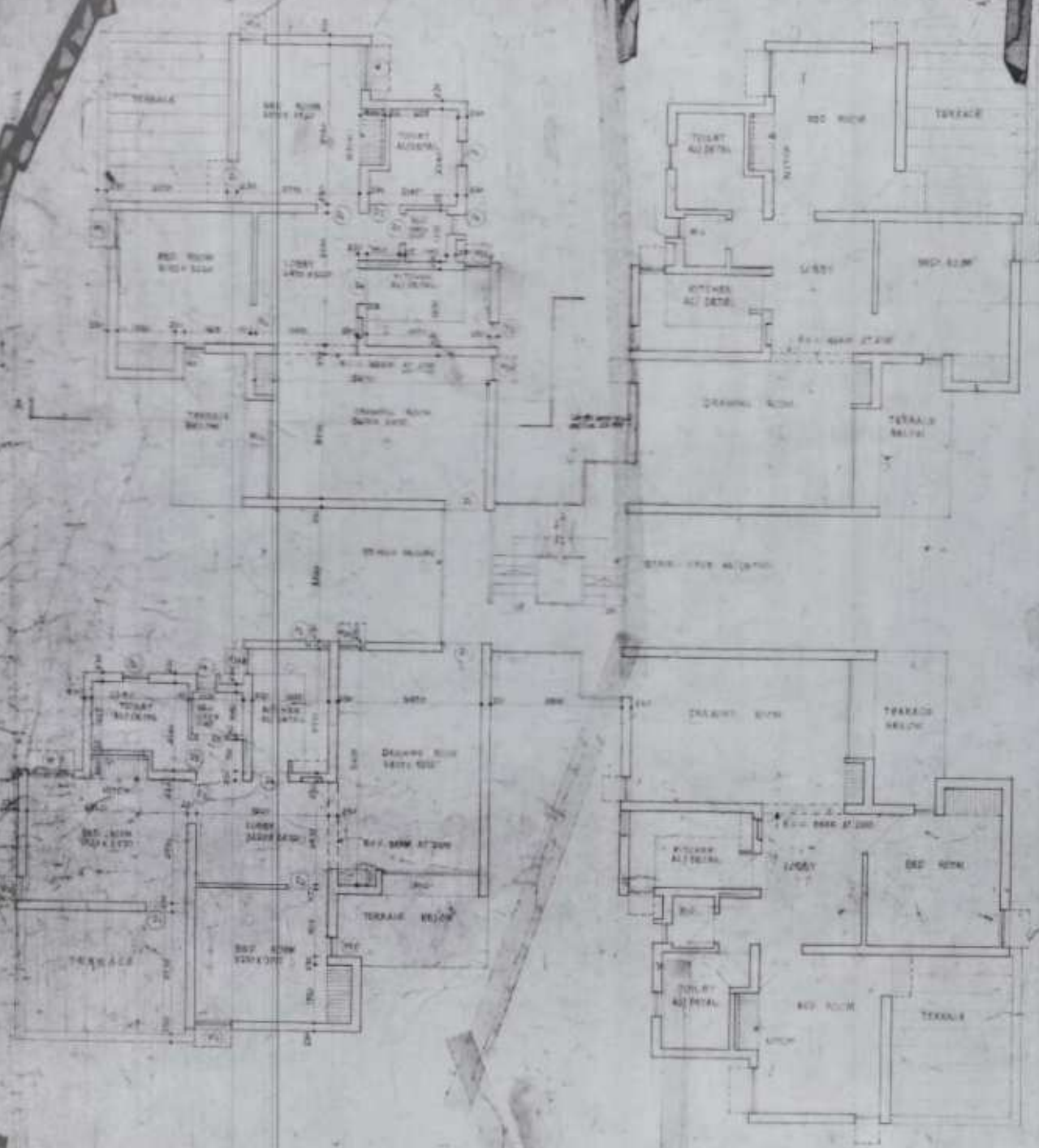
|             |           |
|-------------|-----------|
| STANDARD    | 10'       |
| ROOM        | 10' x 10' |
| FIRST FLOOR | 10' x 10' |

1175





HOUSING DESIGN DEPT.  
 DATED: 11.1.58



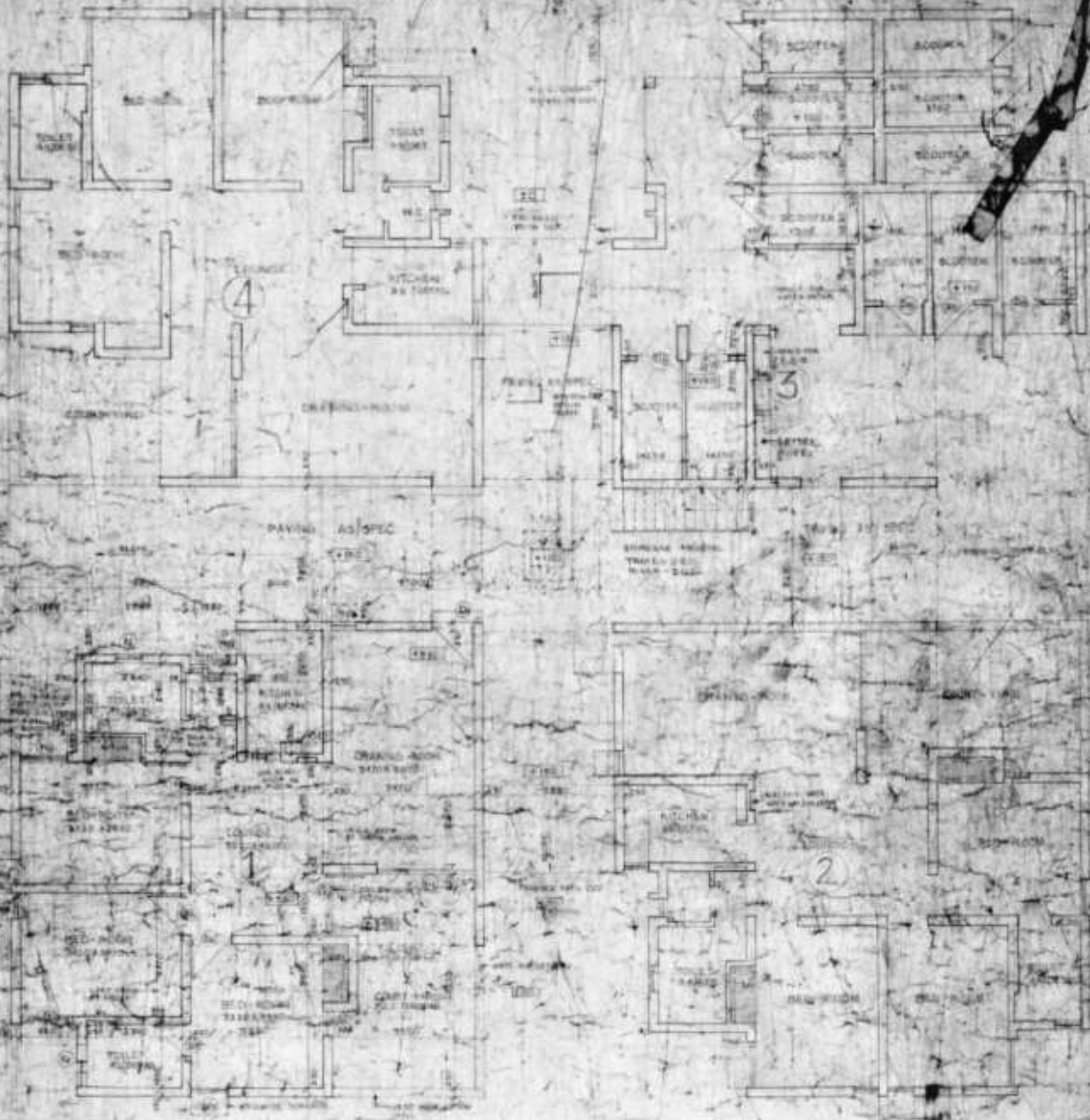
STANDARD  
 TWO AND THREE  
 ROOM HOUSE  
 THIRD FLOOR  
 PLAN

BLOCK NO. 51  
 1. FLOOR PLAN  
 2. PLAN OF ROOF  
 3. PLAN OF ROOF  
 4. PLAN OF ROOF

BLOCK NO. 51  
 1. FLOOR PLAN  
 2. PLAN OF ROOF  
 3. PLAN OF ROOF  
 4. PLAN OF ROOF

CONTENTS OF DRAWINGS

- 1. FLOOR PLAN
- 2. PLAN OF ROOF
- 3. PLAN OF ROOF
- 4. PLAN OF ROOF
- 5. PLAN OF ROOF
- 6. PLAN OF ROOF
- 7. PLAN OF ROOF
- 8. PLAN OF ROOF
- 9. PLAN OF ROOF
- 10. PLAN OF ROOF
- 11. PLAN OF ROOF
- 12. PLAN OF ROOF
- 13. PLAN OF ROOF
- 14. PLAN OF ROOF
- 15. PLAN OF ROOF
- 16. PLAN OF ROOF
- 17. PLAN OF ROOF
- 18. PLAN OF ROOF
- 19. PLAN OF ROOF
- 20. PLAN OF ROOF



51



